



Tapcon®

Anchors



Blue Climaseal™ 410 Stainless Steel

Tapcon Anchor

Product Information and Suggested Specifications

[Selection and Order Information](#) | [Installation Instructions](#)
[Performance Data](#) | [Tapcon Condrive Tool Kits](#) | [Approvals and Listing](#)

DESCRIPTION / SUGGESTED SPECIFICATIONS

Tapcon Anchors—

SPECIFIED FOR ANCHORAGE INTO CONCRETE, BRICK OR BLOCK



anchor performance.

The "original masonry" anchor that cuts its own threads into concrete, brick, or block. Maximum performance is achieved because the Tapcon Anchor, the Condrive Installation Tool, and the carbide-tipped Tapcon Drill Bits are designed to work as a system. It is essential to use the Condrive tool and the correct drill bit to assure consistent

ADVANTAGES

Tapcon "Original"

- Works in all masonry base materials.
- Fast and easy— 3 anchors per minute.
- No hole spotting or inserts required.
- Removable.
- Slotted hex and philips flat head styles.
- Extended corrosion protection— Blue Climaseal™.
- Available in 410 Stainless Steel.

CORRISION RESISTANCE

Kesternich Results (DIN 50018 2.OL)
 Salt Spray Test (ASTM B117)

30 Cycles - 10% or less red rust
 720 Hrs 10% or less red rust

Tapcon Anchors

Hex Head



Phillips Flat Head



Blue Climaseal™ provides extended corrosion protection

Also available in 410 Stainless Steel

Hex Head style on Tapcon Anchors is available for majority of fixture anchoring needs

Phillips Flat Head style is available when flush seating is necessary in countersink applications

Advanced Threadform cuts into concrete and masonry for reduced installation torque and increased pullout performance

Lengths of Tapcon Anchors range from 1-1/4" to 4" in 3/16" and up to 6" in 1/4" diameters.

Nail-Type Point guides the anchor into the pre-drilled hole. Excellent for wood to concrete applications

SUGGESTED SPECIFICATIONS

Self-tapping Concrete Anchors —

SPECIFIED FOR ANCHORAGE INTO CONCRETE, BRICK OR BLOCK

The "original masonry" anchor that cuts its own threads into concrete, brick, or block. Maximum performance is achieved because the Tapcon Anchor, the Condrive Installation Tool, and the carbide-tipped Tapcon Drill Bits are designed to work as a system. It is essential to use the Condrive tool and the correct drill bit to assure consistent anchor performance.



SELECTION CHART

Tapcon Anchors with Blue Climaseal™			Diameter.....3/16" and 1/4" Thread Form.....Advanced Threadform Technology™ Point Type.....Nail Finish.....Blue Climaseal™ All boxes of ITW Tapcon come packaged with matching carbide-tipped bit. Tapcon is packaged 100 pieces per box and 500 pieces per master carton except HW4-600 and PF4-600 (400 in master carton).					
FIXTURE THICKNESS INCHES	RECOMMENDED TAPCON LENGTH In. (mm)	PART NO. 3/16" HEX HEAD	PART NO. 1/4" HEX HEAD	PART NO. 3/16" FLAT HEAD	PART NO. 1/4" FLAT HEAD	BIT LENGTH In. (mm)	STRAIGHT SHANK BITS FOR 3/16" TAPCON PART NO.	STRAIGHT SHANK BITS FOR 1/4" TAPCON PART NO.
0" - 1/4"	1-1/4 (31.8)	HW3-114	HW4-114	PF3-114	PF4-114	3-1/2 (88.9)	7900814	7901014
1/4" - 3/4"	1-3/4 (44.5)	HW3-134	HW4-134	PF3-134	PF4-134	3-1/2 (88.9)	7900814	7901014
3/4" - 1-1/4"	2-1/4 (57.2)	HW3-214	HW4-214	PF3-214	PF4-214	4-1/2 (114.3)	7900818	7901018
1-1/4" - 1-3/4"	2-3/4 (69.9)	HW3-234	HW4-234	PF3-234	PF4-234	4-1/2 (114.3)	7900818	7901018
1-3/4" - 2-1/4"	3-1/4 (82.6)	HW3-314	HW4-314	PF3-314	PF4-314	5-1/2 (139.7)	7900822	7901022
2-1/4" - 2-3/4"	3-3/4 (95.3)	HW3-334	HW4-334	PF3-334	PF4-334	5-1/2 (139.7)	7900822	7901022
2-1/2" - 3"	4 (101.6)	HW3-400	HW4-400	PF3-400	PF4-400	5-1/2 (139.7)	7900822	7901022
3-1/2" - 4"	5 (127.0)	---	HW4-500	---	PF4-500	6-1/2 (165.1)	---	7901026
4-1/2" - 5"	6 (152.4)	---	HW4-600	---	PF4-600	7-1/2 (190.5)	---	7901030

SELECTION CHART

Tapcon 1/4" 410 Stainless Steel Anchor		Diameter.....1/4" Thread Form.....Original Notched Hi-Lo™ Point Type.....Nail Finish.....410 Stainless Steel with Silver Climaseal™ All boxes of ITW Tapcon come packaged with matching carbide-tipped bit. Tapcon is packaged 100 pieces per box and 500 pieces per master carton except 3461907 (400 in master carton).			
FIXTURE THICKNESS INCHES	RECOMMENDED TAPCON LENGTH In. (mm)	PART NO. 1/4" HEX HEAD	PART NO. 1/4" FLAT HEAD	BIT LENGTH In. (mm)	STRAIGHT SHANK BITS for 1/4" TAPCON PART NO.
0" - 1/4"	1-1/4 (31.8)	SHW4-114	SPF4-114	3-1/2 (88.9)	7901014
1/4" - 3/4"	1-3/4 (44.5)	SHW4-134	SPF4-134	3-1/2 (88.9)	7901014
3/4" - 1-1/4"	2-1/4 (57.2)	SHW4-214	SPF4-214	4-1/2 (114.3)	7901018
1-1/4" - 1-3/4"	2-3/4 (69.9)	SHW4-234	SPF4-234	4-1/2 (114.3)	7901018
1-3/4" - 2-1/4"	3-1/4 (82.6)	SHW4-314	SPF4-314	5-1/2 (139.7)	7901022
2-1/4" - 2-3/4"	3-3/4 (95.3)	SHW4-334	SPF4-334	5-1/2 (139.7)	7901022
2-1/2" - 3"	4 (101.6)	3459907	---	5-1/2 (139.7)	3100910
3-1/4" - 4"	5 (127.0)	3460907	---	6-1/2 (165.1)	3102910
4-1/4" - 5"	6 (152.4)	3461907	---	7-1/2 (190.5)	3461907

SELECTION CHART

Tapcon 3/16" 410 Stainless Steel Anchor		Diameter.....3/16" Thread Form.....Original Notched Hi-Lo™ Point Type.....Nail Finish.....410 Stainless Steel with Silver Climaseal™ All boxes of ITW Tapcon come packaged with matching carbide-tipped bit. Tapcon is packaged 100 pieces per box and 500 pieces per master.		
FIXTURE THICKNESS INCHES	RECOMMENDED TAPCON LENGTH In. (mm)	PART NO. 3/16" FLAT HEAD	BIT LENGTH In. (mm)	STRAIGHT SHANK BITS FOR 3/16" TAPCON PART NO.
0" - 1/4"	1-1/4 (31.8)	3434907	3-1/2 (88.9)	7900814
1/4" - 3/4"	1-3/4 (44.5)	3418907	3-1/2 (88.9)	7900814
3/4" - 1-1/4"	2-1/4 (57.2)	3419907	4-1/2 (114.3)	7900818
1-1/4" - 1-3/4"	2-3/4 (69.9)	3420907	4-1/2 (114.3)	7900818
1-3/4" - 2-1/4"	3-1/4 (82.6)	3421907	5-1/2 (139.7)	7900822
2-1/4" - 2-3/4"	3-3/4 (95.3)	SHW4-334	5-1/2 (139.7)	7900822

**Tapcon
SDS Bits**

PART NUMBER	DESCRIPTION
790059	7" (SDS Rotohammer Bits for use with 3/16" Tapcon)
7901060	5" (SDS Rotohammer Bits for use with 1/4" Tapcon)
7901059	7" (SDS Rotohammer Bits for use with 1/4" Tapcon)



Tapcon® **Condrive 1000 Tool Kit** **and Starter Kit**

Installation **Tool Kit**



Condrive 1000 - Part No. C1000



Tapcon Starter Kit - Part No. 7904050

DESCRIPTION / SUGGESTED SPECIFICATIONS

Condrive 1000 Installation Tool — **SPECIFIED FOR ANCHORAGE INTO CONCRETE, BRICK OR BLOCK**

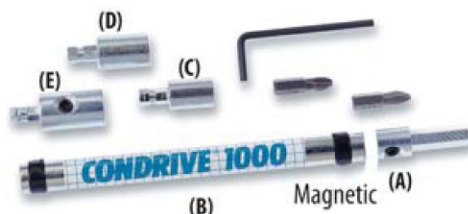
The key to Tapcon's fast and easy installation is the multi-purpose Condrive Installation Tool. The drive sleeve along with the hex head and phillips sockets provide the installer with the flexibility necessary for the complete variety of Tapcon applications (tool does not include drill bit).

Condrive® 1000 - A multi-purpose tool designed for installation of Tapcon hex head and Phillips flat head anchors up to 3-3/4" long. If driving hex head Tapcon, driver will automatically disengage. The Condrive 1000 has a reusable plastic case.

Condrive Tools are designed to specifically install Tapcon Anchors and to fit standard hammer drills.

ADVANTAGES

- Fast change from drilling to driving
- Eliminates need to change out chuck and bits
- Eliminates need for two tools
- Special nut driver is recessed for torque control to reduce head breakage



Condrive 1000 Spare Parts		
PART NO.	DESCRIPTION	QTY/WT
(A) 7901001	Drill Adapter	1/.06
(B) 7901002	Sleeve	1/.01
7901003	Black Band	1/.02
7901004	5/32" Ball Bearing	1/.02
(C) 7901006	3/16" Socket	1/.04
(D) 7901007	1/4" Socket	1/.05
7901008	#2 Phillips bit for 3/16" anchor	1/.10
7901009	#3 Phillips bit for 1/4" anchor	1/.12
(E) 7901010	Phillips Socket	1/.44
7902006	Set Screw	1/.02
7902008	1/16" Ball Bearing	1/.02
7902010	1/8" Hex Key	1/.10

APPLICATIONS



This picture shows the Condrive 1000 Installation tool in action. The tool makes for fast and easy change over from drill bit to driver and controls the driving torque to prevent thread stripping and head snapping in hard base materials.



Tapcon Starter Kit

Starter Kit
Part Number: 7904050

Kit Contains:

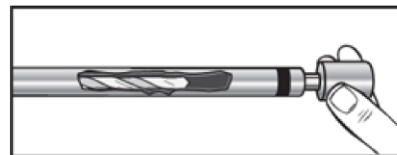
- 1 Box HW4-114 (includes 1 drill bit)
- 1 Box HW4-134 (includes 1 drill bit)
- 1 Condrive 1000

INSTALLATION GUIDELINES

Using the Condrive 1000®

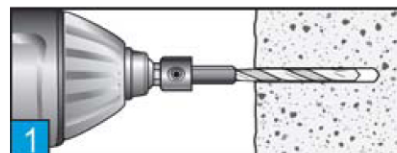
PREPARATION:

1. Place drill adapter into 3/8" or 1/2" chuck of hammer drill. Tighten chuck.
2. Place correct Tapcon® drill bit in drill adapter and tighten set screw.
3. Add socket matching anchor type to end of sleeve.



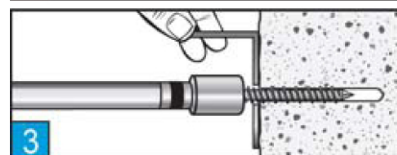
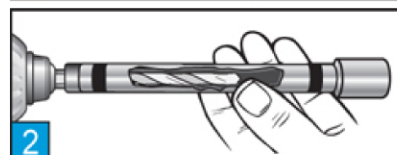
DRILL:

1. Drill hole 1/4" deeper than depth of embedment. Tapcon® anchor requires a minimum embedment of 1".



DRIVE:

2. Slide Condrive® sleeve over drill bit and snap into drill adapter.
3. Insert anchor in the end of the sleeve, position fixture to be fastened, and drive the Tapcon® anchor into the predrilled hole.



Tool automatically disengages when Hex head anchor is set.